



# RO Oral Hearing - Glasnevin

March 2024





# Glasnevin Strategic Location



- Strategically important interchange



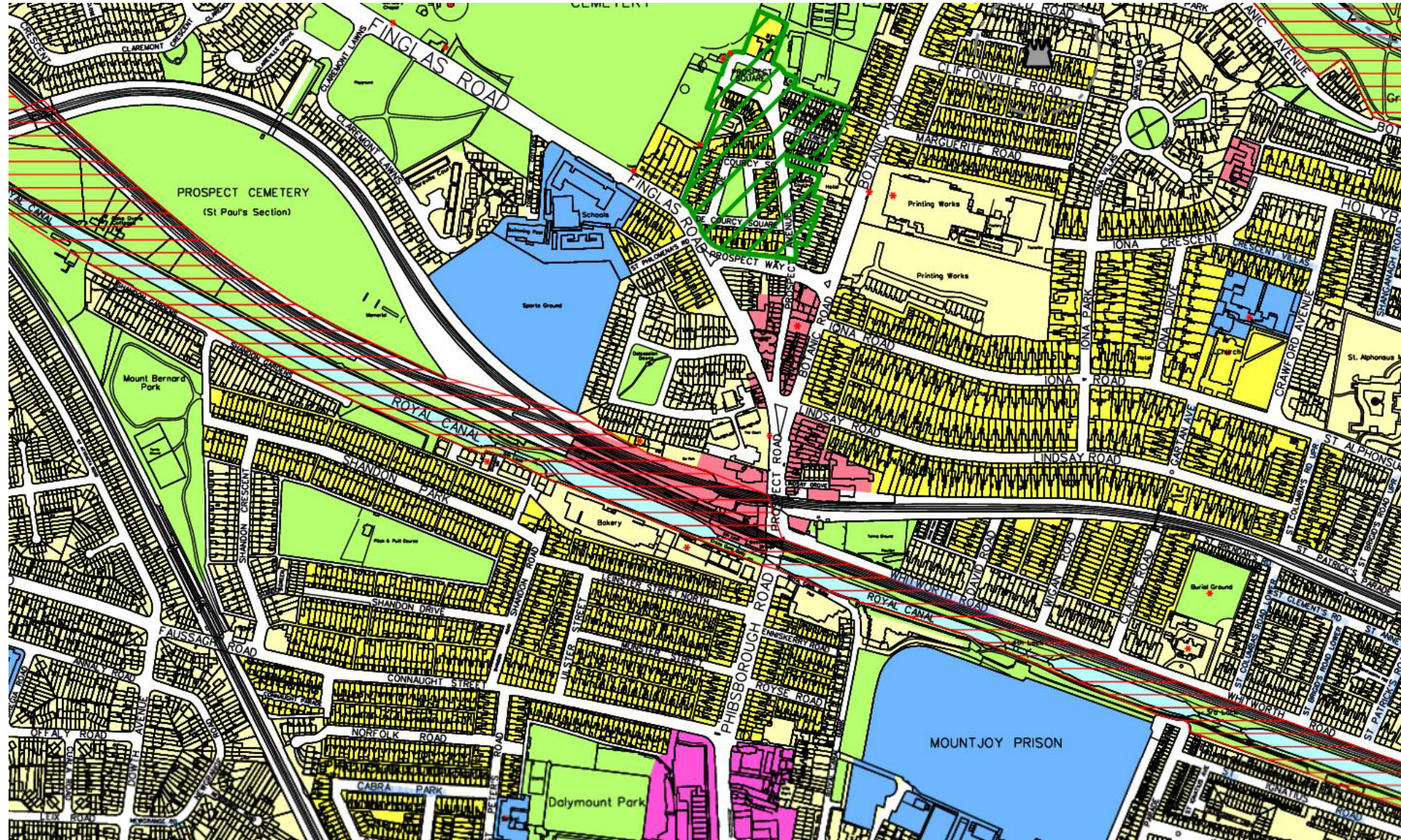


# Glasnevin Character and Role



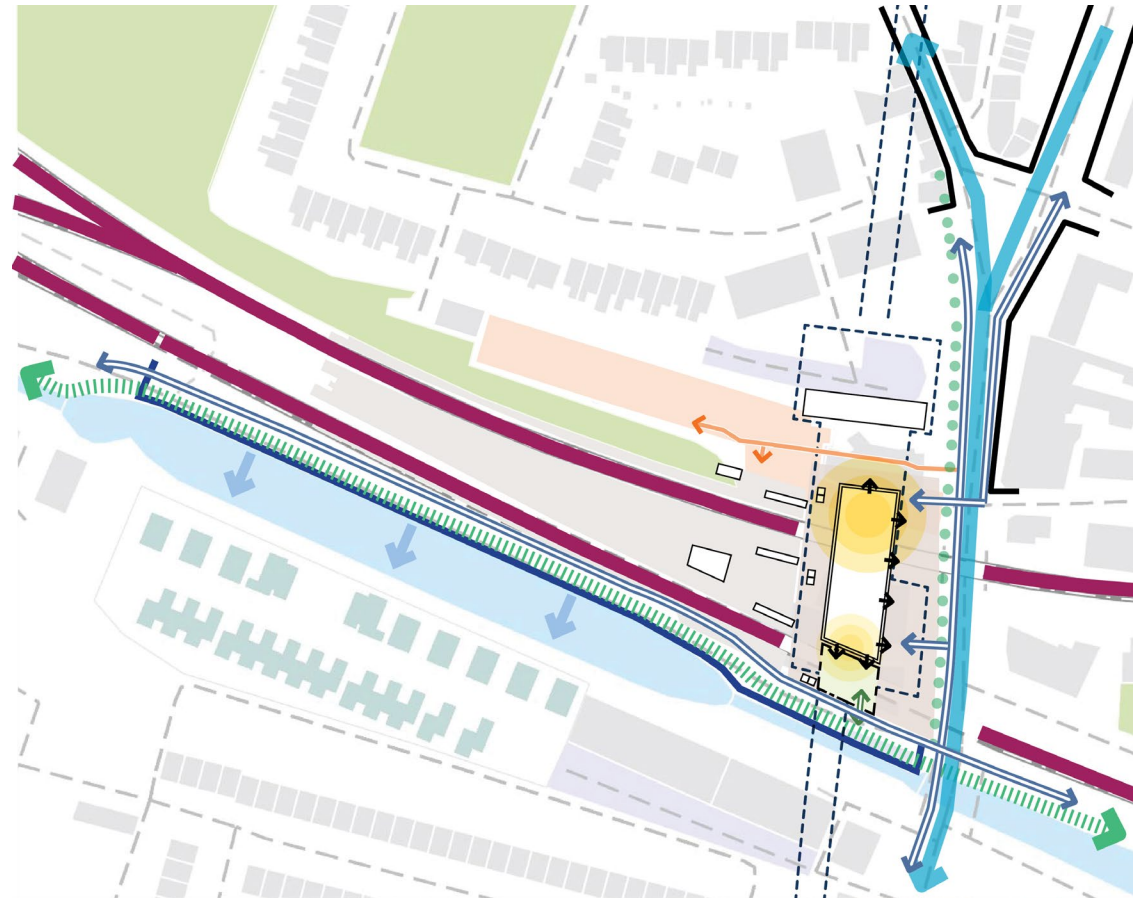
Dublin City  
Development Plan  
2022 - 2028

- Neighbourhood Centre
- Conservation Area





# Glasnevin Setting





# Glasnevin Design Considerations







The image is a monochromatic architectural rendering of a transit station interior. On the left, a massive, textured concrete wall rises vertically. In the center, a wide staircase with a dark railing leads upwards, with several stylized human figures walking on it. To the right of the stairs is a platform area with a glass-enclosed structure, possibly for a train or tram. Above this structure, a digital display shows travel times: '1 min', '4 mins', and '7 mins'. The ceiling is composed of horizontal slats, and the overall design is clean and modern. The text 'Design Intent' is positioned above 'Station Integration' on the right side of the image.

# Design Intent Station Integration



# Metrolink Identity



Surface Stations



Interchange Station



Underground Stations

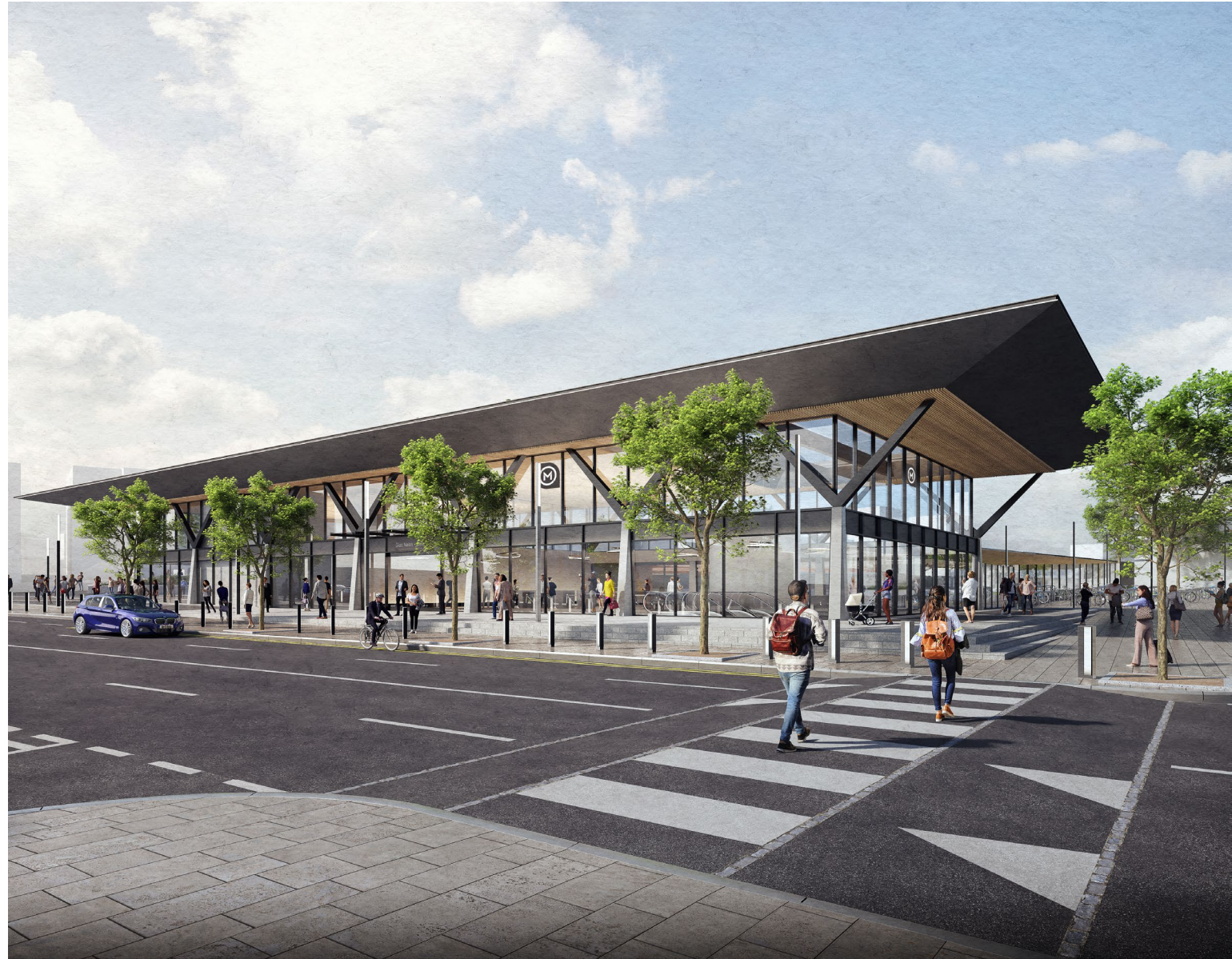


# Station Integration

# A High-Quality Transport Hub



- Glasnevin station will be a new multi-modal interchange station that will serve as a symbol of sustainable transport.
- Interchanging between Metrolink, Irish Rail, Bus, & Cycle and pedestrian networks.
- A high quality, transport focused building. With a quality passenger experience that meets the aspirations and design vision of MetroLink and Irish Rail.



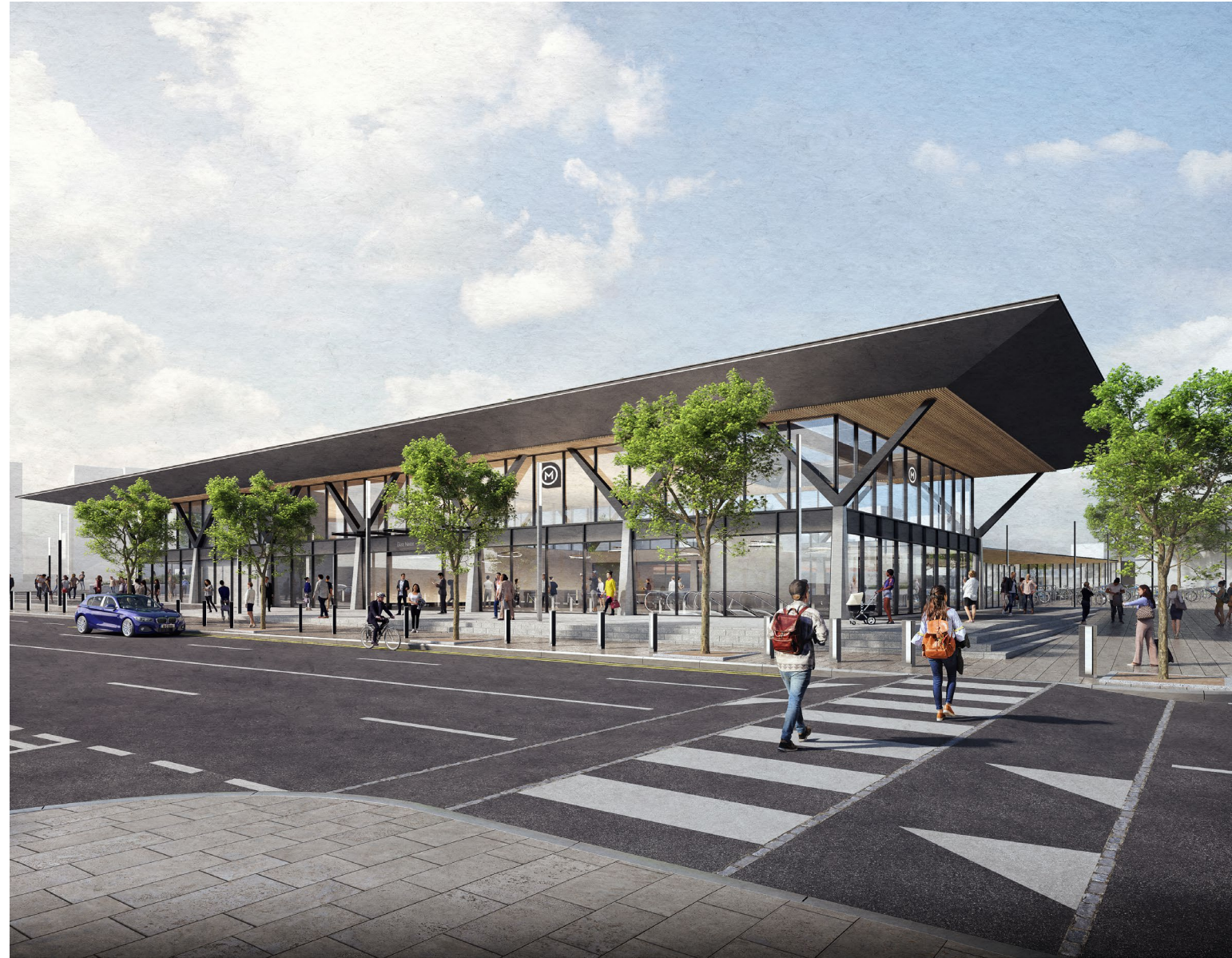


# Station Integration

# A High-Quality Transport Hub



- The proposal repairs and activates the street frontage whilst maintaining permeability along the façade.
- The public realm mitigates level changes and supports passenger flows and onward journeys with accessibility for all.
- Generous south facing public plaza opening onto the Royal Canal Greenway activated with commercial and community amenity opportunity.







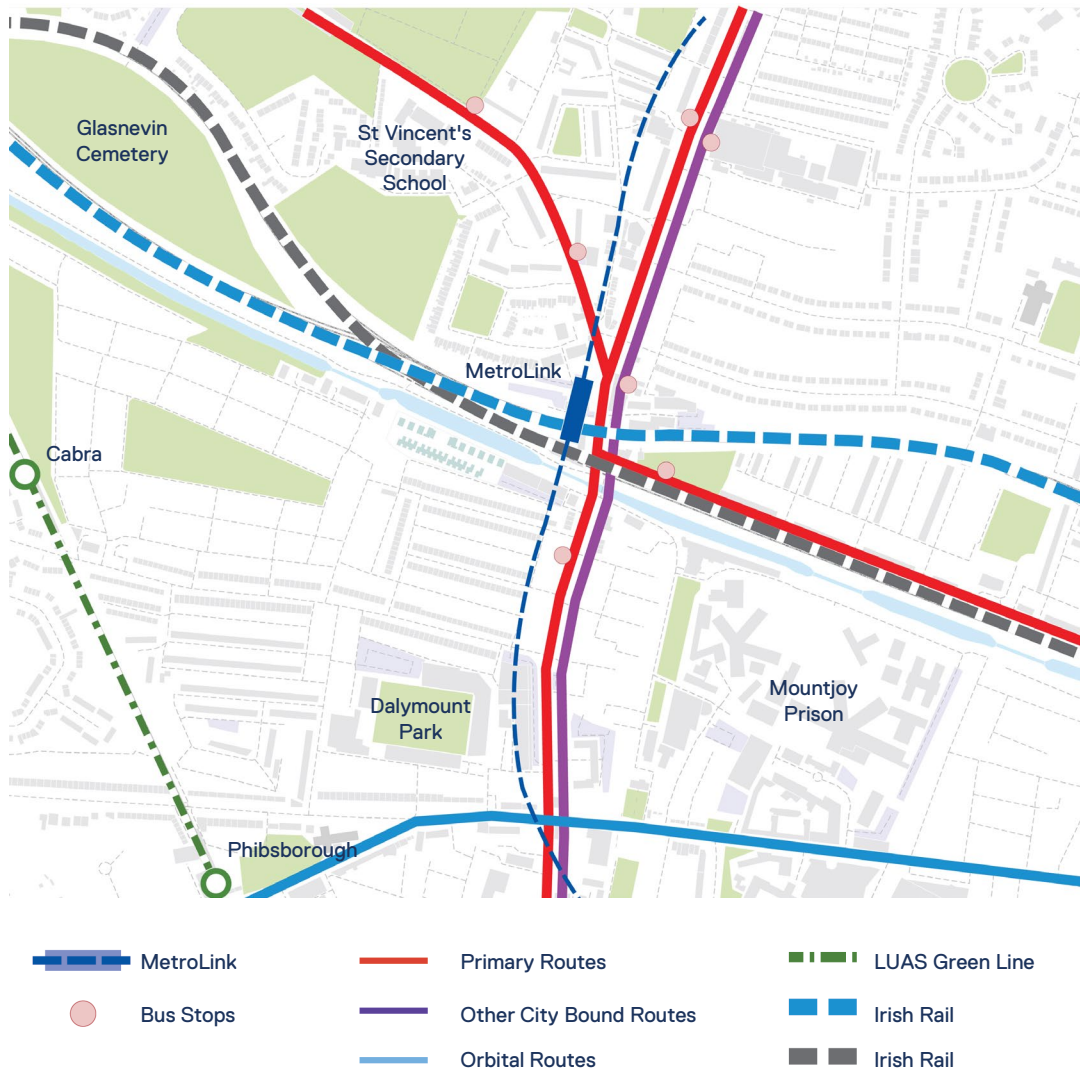
# Design Intent Station Architecture



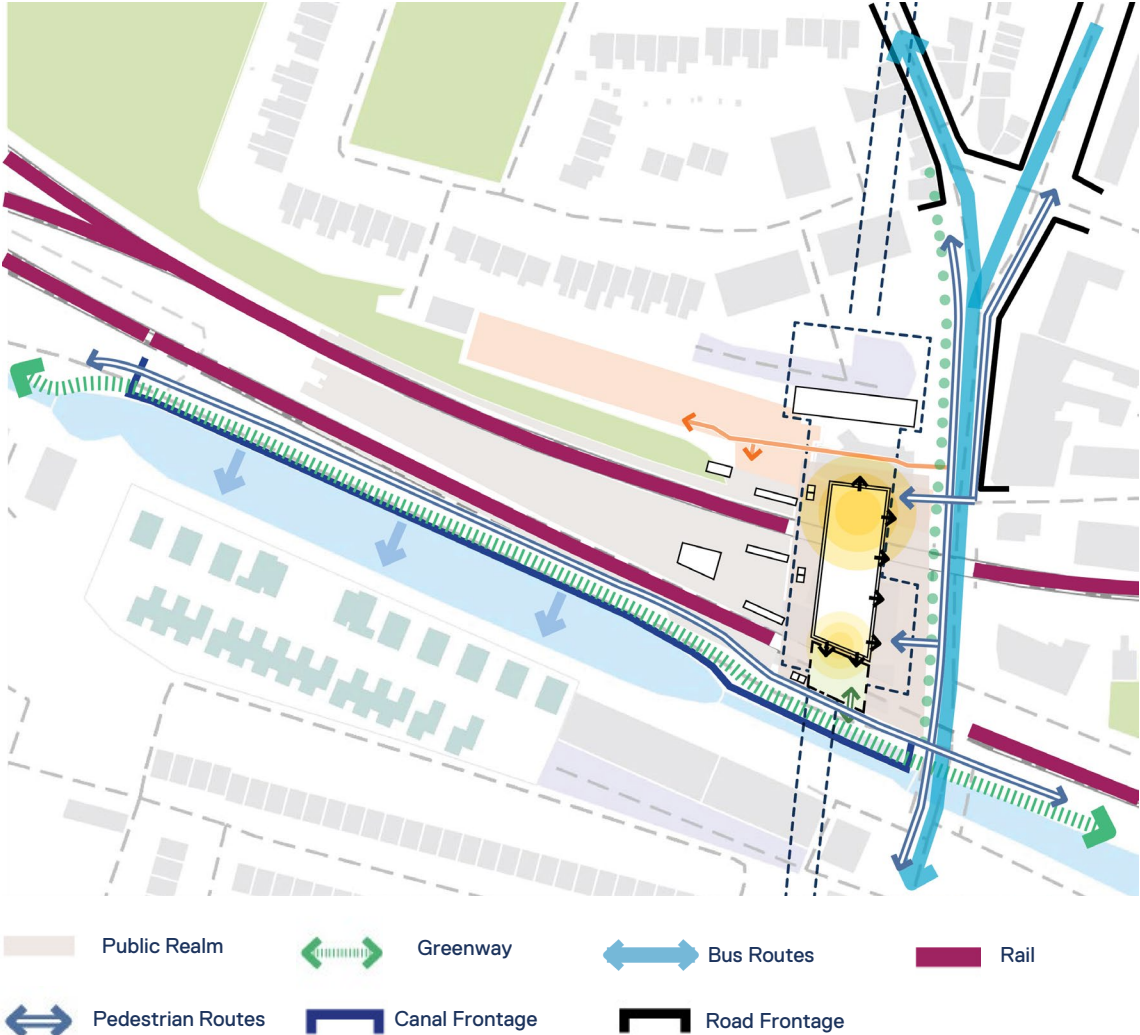
# Glasnevin Site Analysis



Transport Network – MetroLink, Rail, Buses

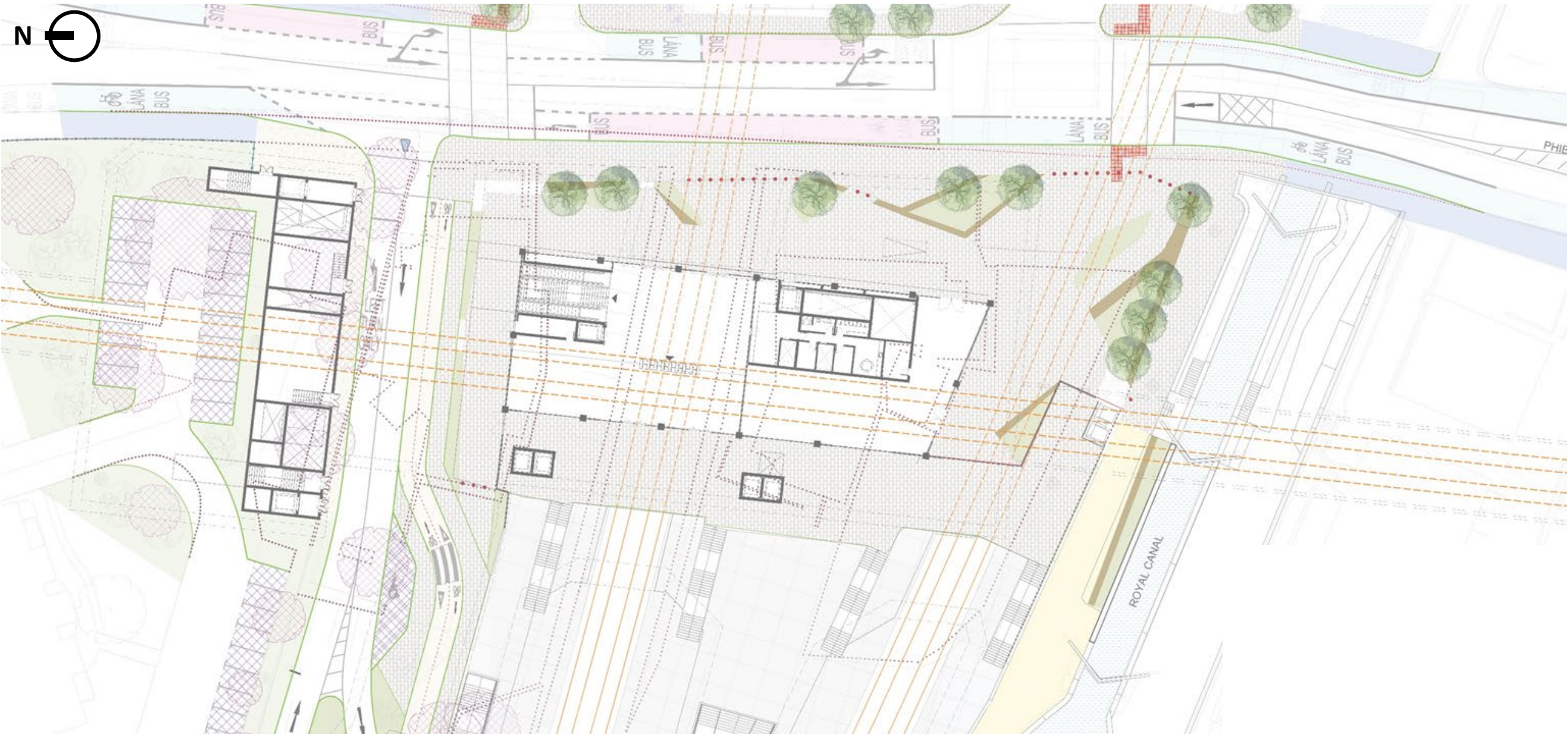


Interchange Hub



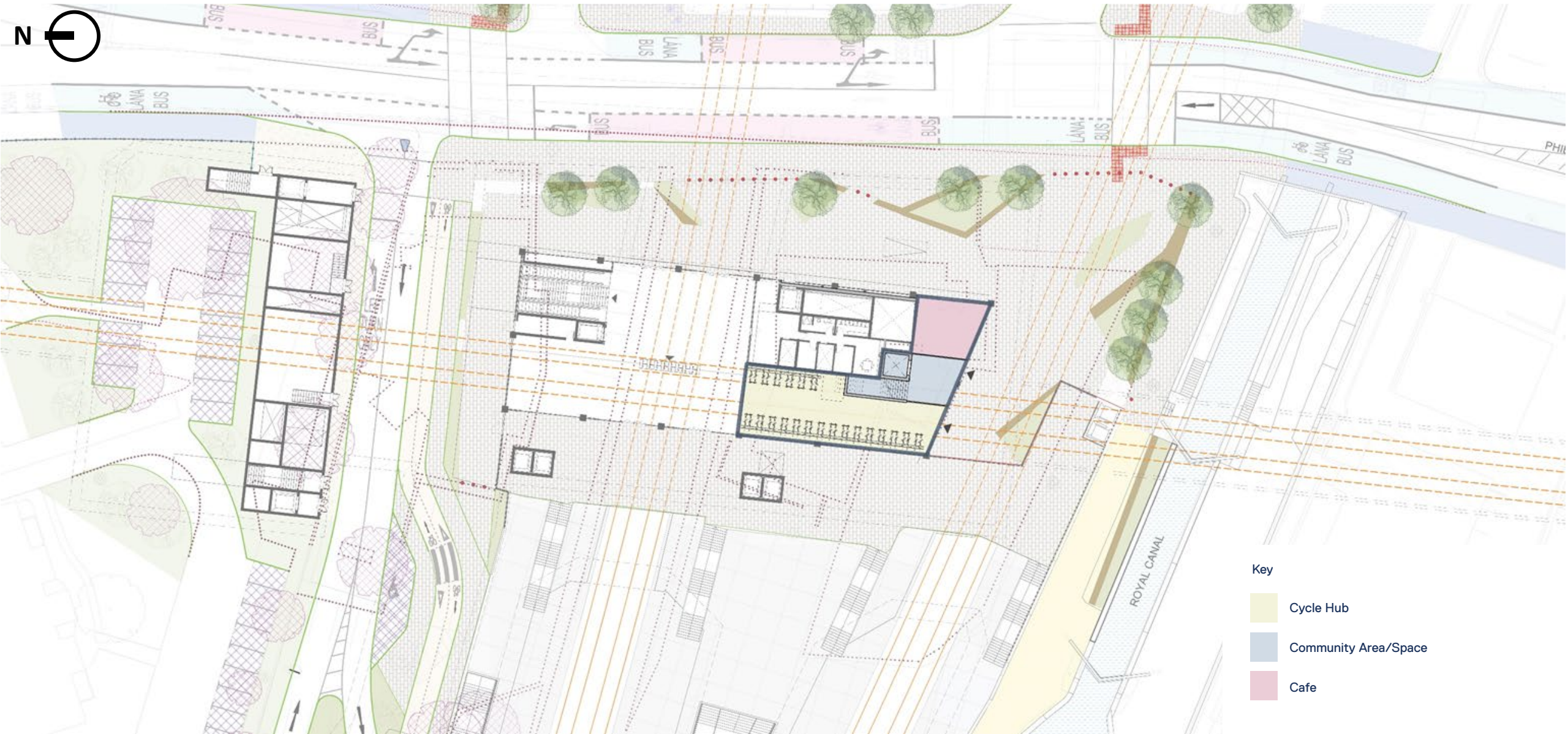


# Glasnevin Public Realm Sketch – Grade Level








# Glasnevin Public Realm Sketch – Grade Level

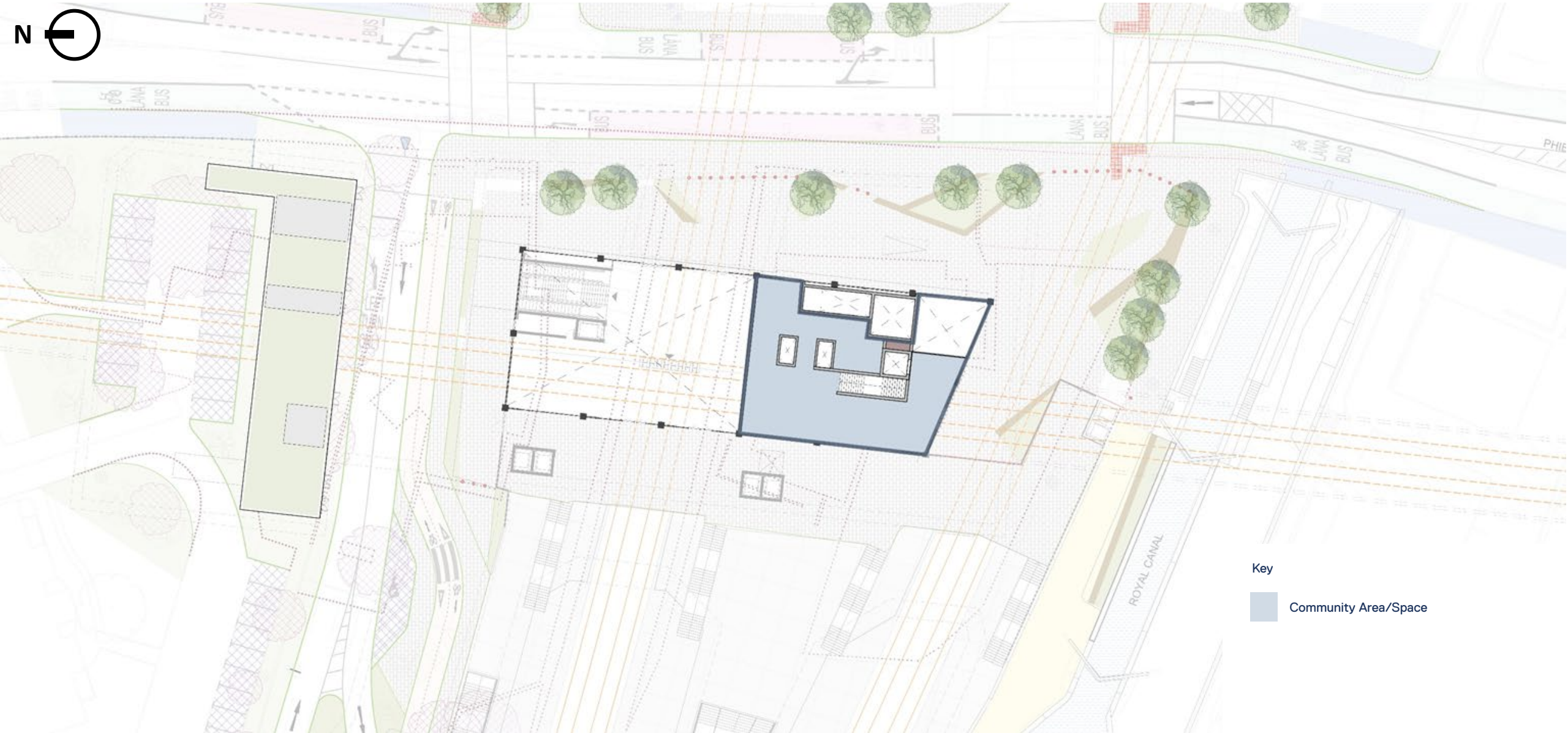


Key

-  Cycle Hub
-  Community Area/Space
-  Cafe



# Glasnevin Public Realm Sketch – Level 01

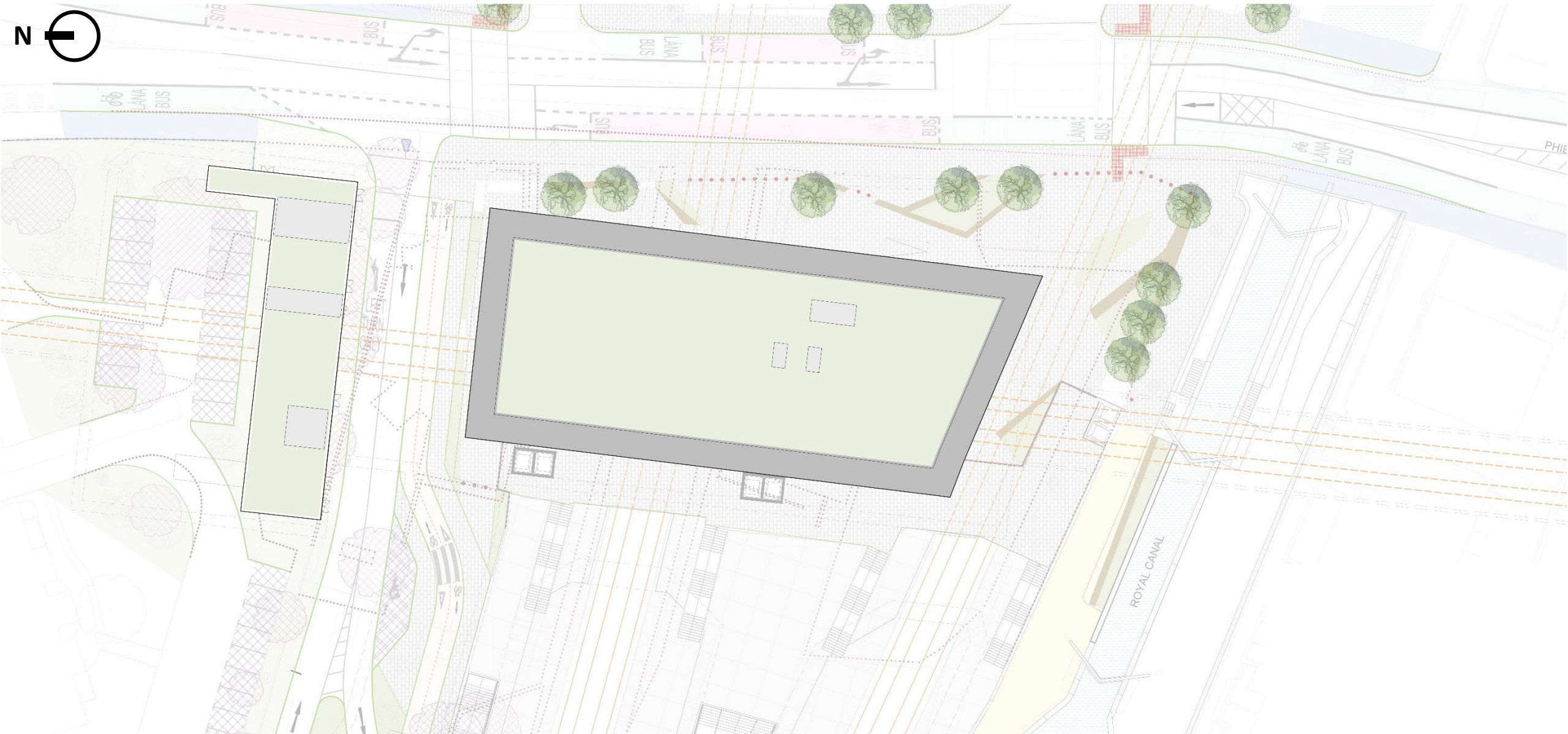


Key

Community Area/Space



# Glasnevin Public Realm Sketch – Roof Level





# Glasnevin Station North





# Glasnevin Station South





An architectural rendering of a modern transit station. The scene is dominated by a large, textured concrete wall on the left. In the center, a wide staircase with a dark railing leads up. To the right, a platform with a glass and metal structure is visible. People are shown walking on the stairs and platform, adding a sense of scale and activity. The overall design is clean and functional, with a focus on materials and spatial organization.

# Future Design Development Local Context & Character



# Common Components Vision Principles



Durability, Security  
& Functionality



Sensitive to Local  
Contexts & Character



Linewide Identity  
& Branding



Legibility &  
Universal Access



Shelter & Weather  
Protection



Environmental  
Performance



# Local Context & Character Glasnevin Local History



**National Botanic Gardens** - Holds over 15,000 plant species and cultivars from a variety of habitats from all around the world.



**Glasnevin Cemetery** – The most historically notable and largest burial place in the country, for ordinary citizens and Irish patriots. It is said many of Brian Boru's men were buried.

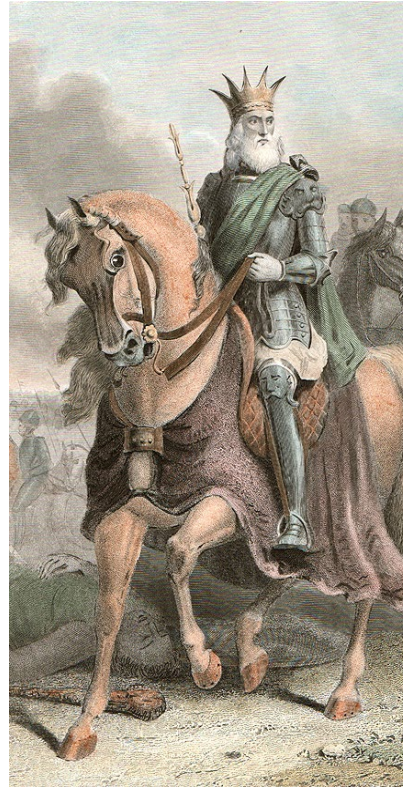


# Local Context & Character

## Local Landmarks



**The Battle of Clontarf** – The Irish, led by Brian Boru (High King of Ireland), defeated the Danes in the Battle of Clontarf fought on the banks of the River Tolka in Glasnevin in 1014. Since the battle, the Vikings' raids on Ireland came to a near halt and attention was turned to England and Scotland.



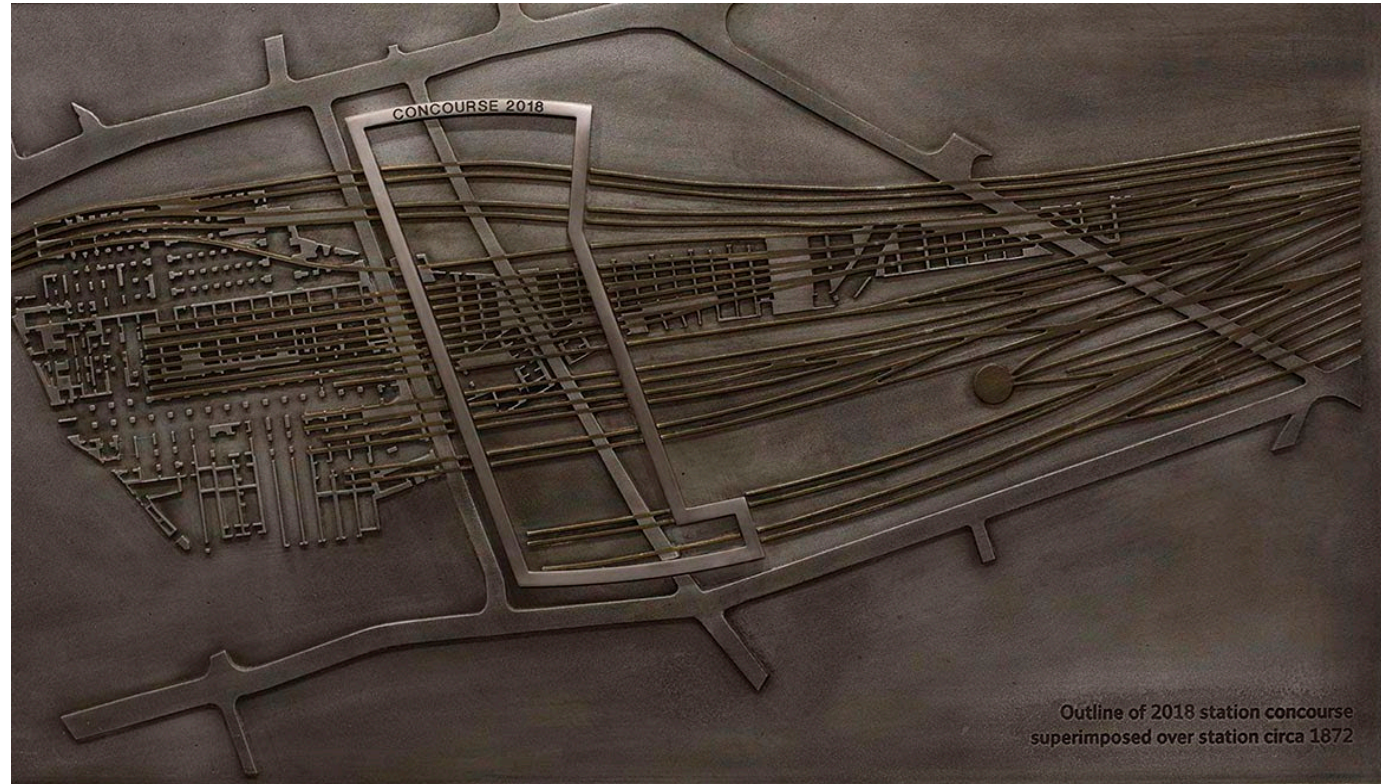
**The Brian Boru** - Has been a public house for over 200 years. The current building dates from the 1850's and has been in the ownership of the Hedigan family since 1904.

The pub was mentioned in Ulysses as Joyce's party of mourners pass by on their way to the Cemetery. The pub's location is where it was believed Brian Boru and his army camped before the Battle of Clontarf, on Good Friday 1014, also known as 'Battle of the fishing weir of Clontarf'.

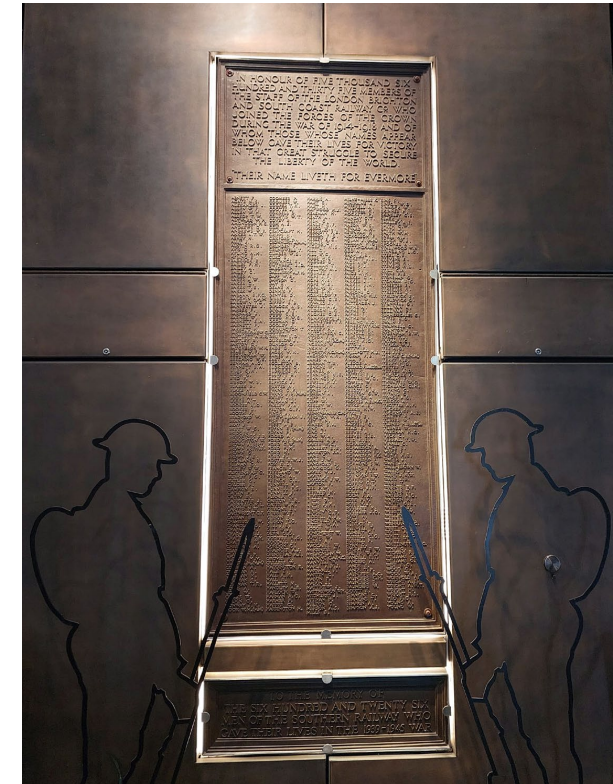




# Local Context & Character London Bridge Station



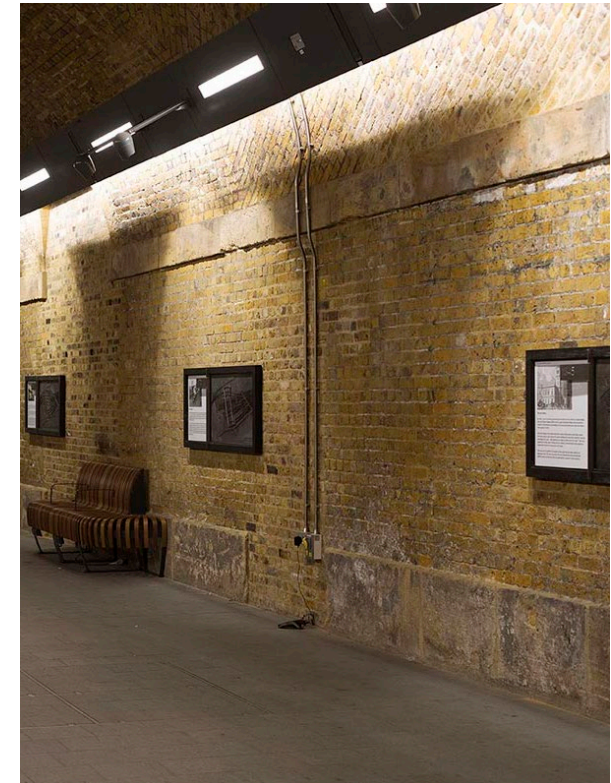
London Bridge Heritage Plaques,  
Millimetre, Grimshaw, New Pro Foundries,  
London Bridge Station Redevelopment



Commemorative Memorial  
Plaques, London Bridge Station  
Redevelopment



# Local Context & Character Illustrative Location





# Glasnevin Station North







Thank You